

Injury attendances to Trafford General Hospital Emergency Department

April 2008 to March 2009

This report summarises recorded injury attendances to Trafford General Emergency Department (ED) between April 2008 and March 2009.

Between April 2008 and March 2009 there were 53,900 injury attendances to Trafford General ED. Males accounted for over half of all attendances (n=27,303; 51%). The month with the highest injury attendances was March (n=5,066) with January having the lowest attendances (n=4,115) (**Figure 1**). The majority of attendances were recorded as other accident (94%). Road traffic collisions (RTCs) accounted for the highest proportion (3%) among specified injury groups followed by sports injury (2%) (**Table 1**).

For all injuries the highest proportion of attendances were for persons aged 20-34 (21%) and 5-19 (20%) (**Figure 2**). Nearly four in ten (39%) of RTC attendees were aged 20 to 34. Over a half (52%) of sports injury attendees were aged 5 to 19 (**Figure 3**).

Table 2 shows the ethnicity of attendees to Trafford General ED. Nearly six in ten (n=31,742; 59%) were white whilst over a third (36%) were recorded as not known.

The disposal of a patient can give an indication of the severity of the injuries sustained. Nearly half (46%) of attendees were discharged, over a third (34%) were referred and 15% were admitted to hospital (**Table**

3). Nearly three-quarters (71%) of RTC attendees were discharged. Over half (55%) of sports injury attendees were discharged, while nearly half (45%) of deliberate self harm (DSH) attendees were admitted. (**Table 4**).

Table 5 shows the arrival methods of attendances at Trafford General ED. Over three-quarters (79%) of attendees arrived by private transport, whilst 17% arrived by ambulance.

Table 6 shows the time of arrival of injury attendees to Trafford General ED. The largest proportion of injury attendances occurred between 10.00am and 11.59am (n=9,005; 17%). Over a third (n=230; 37%) of assault attendees presented at the ED between the hours of 22.00pm and 03.59am.

Figure 4 (a-d) shows crude rates of attendance at Trafford General ED by area of residence, in this case Middle Super Output Area (MSOA). The MSOAs with the highest crude rates are indicated beneath each figure.¹

¹ Population figures are drawn from mid-2008 population estimates from the Office for National Statistics.

Figure 1: Trafford General ED: Total injury attendances by gender and month, April 2008 to March 2009

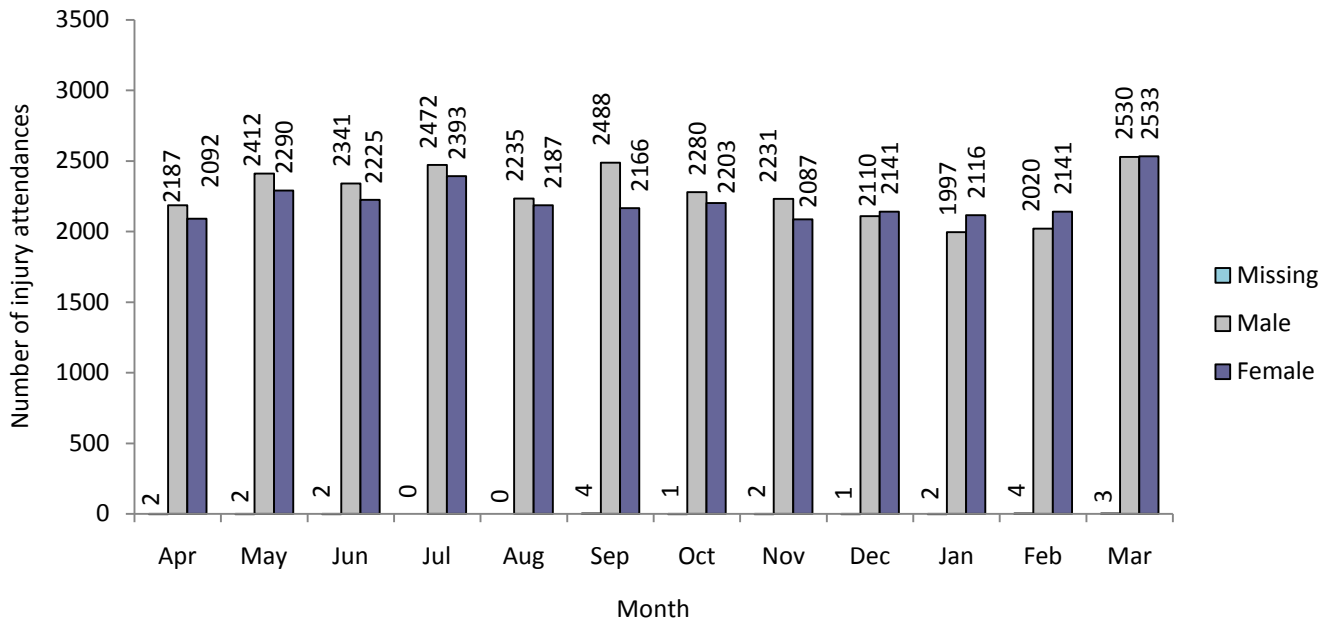
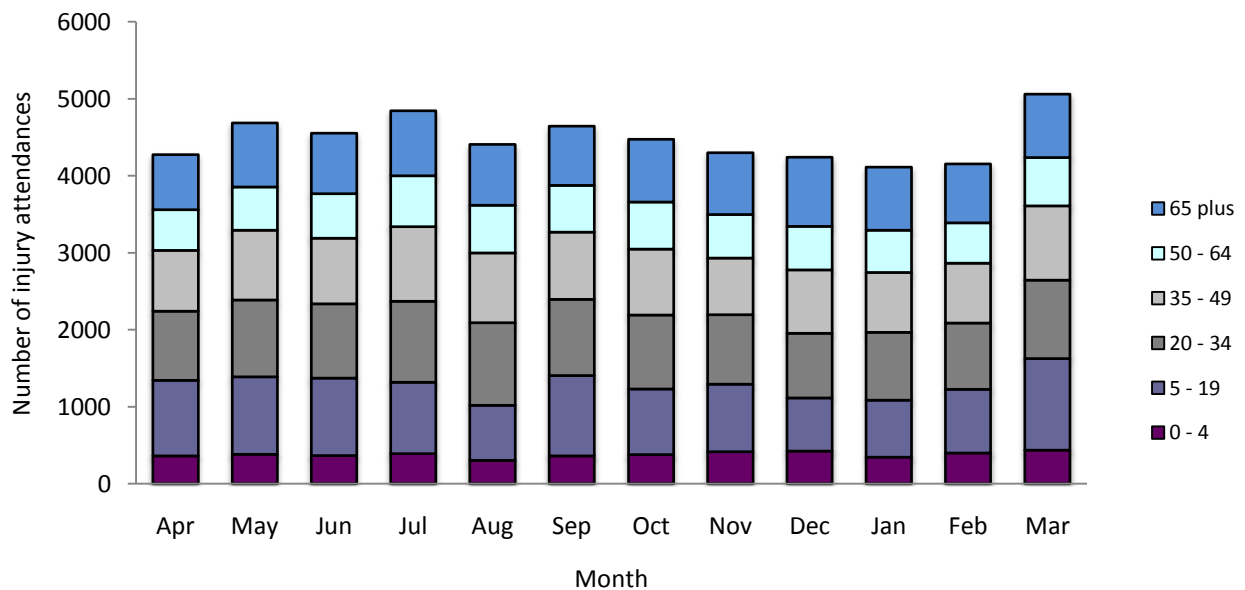


Table 1: Trafford General ED: Total injury attendances by injury group and month, April 2008 to March 2009²

Injury group	Apr	May	Jun	Jul	Aug	Sep	Oct	Nov	Dec	Jan	Feb	Mar	Total	%
Other accident	3924	4403	4306	4579	4175	4347	4162	4008	4004	3860	3943	4715	50426	94
RTC	141	101	122	129	94	134	152	144	114	99	82	123	1435	3
Sports injury	119	106	65	72	59	82	72	82	46	78	62	152	995	2
Assault	57	50	46	49	54	61	52	50	55	47	48	48	617	1
DSH	40	44	29	36	40	34	46	36	33	31	30	28	427	1
Total	4281	4704	4568	4865	4422	4658	4484	4320	4252	4115	4165	5066	53900	100

Figure 2: Trafford General ED: Total injury attendances by age group and month, April 2008 to March 2009



² Firework injury (n=1) has been included in other accident due to low numbers.

Figure 3: Trafford General ED: Total injury attendances by age group and injury group, April 2008 to March 2009

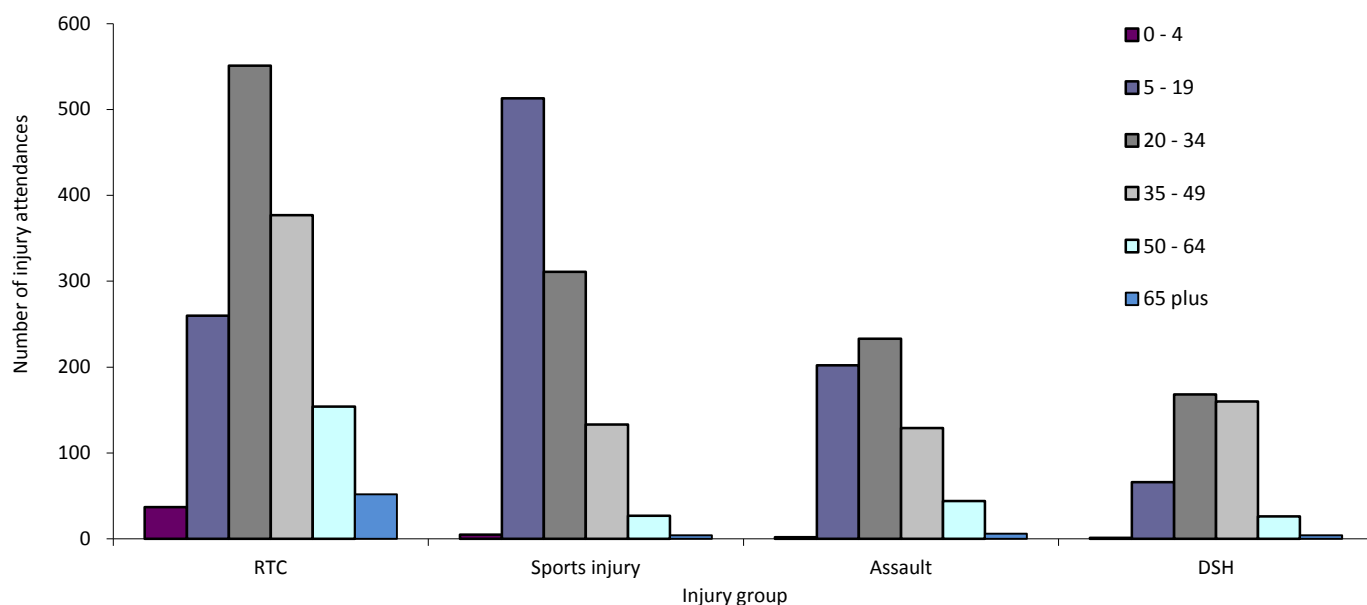


Table 2: Trafford General ED: Total injury attendances by ethnicity and month, April 2008 to March 2009³⁴

Ethnicity	Apr	May	Jun	Jul	Aug	Sep	Oct	Nov	Dec	Jan	Feb	Mar	Total	%
White	2125	2378	2219	2403	2213	2268	2292	2658	3318	3032	3074	3762	31742	59
Not known	1966	2139	2174	2277	2028	2212	2009	1432	573	774	793	901	19278	36
Pakistani	60	51	51	44	44	43	52	56	90	76	82	100	749	1
Black	44	54	39	66	40	34	31	47	69	60	64	77	625	1
Indian	28	29	28	32	27	36	35	37	76	57	46	61	492	1
Any other ethnic group	29	28	26	24	38	21	27	24	47	56	45	59	424	1
Mixed	13	18	19	13	18	32	25	48	48	36	39	71	380	1
Any other Asian background	***	***	***	***	7	6	7	10	16	8	10	18	94	0
Chinese	7	***	7	***	5	***	***	***	10	8	6	10	69	0
Bangladeshi	***	***	***	***	***	***	***	***	5	8	6	7	47	0
Total	4281	4704	4568	4865	4422	4658	4484	4320	4252	4115	4165	5066	53900	100

Table 3: Trafford General ED: Total injury attendances by method of disposal and month, April 2008 to March 2009⁵

Disposal	Apr	May	Jun	Jul	Aug	Sep	Oct	Nov	Dec	Jan	Feb	Mar	Total	%
Discharged	1872	2167	2110	2293	2275	2418	2116	2084	1904	1697	1762	2346	25044	46
Referred/follow-up	1578	1685	1697	1781	1343	1424	1492	1420	1458	1520	1454	1597	18449	34
Admitted	650	628	572	607	622	626	698	660	721	756	731	845	8116	15
Other	181	224	189	184	182	190	178	156	169	142	218	278	2291	4
Total	4281	4704	4568	4865	4422	4658	4484	4320	4252	4115	4165	5066	53900	100

³ Please note that all numbers less than five have been suppressed in line with patient confidentiality and if there is only one number <5 in a category then two numbers will be suppressed at the next level.

⁴ White = Irish, British, other white background; Mixed = white and black, white and Asian, mixed any other; Other = any other ethnic group, any other Asian background; Black = African, Caribbean, other black.

⁵ Admitted=admitted to hospital/became a lodged patient of the same health care provider; Discharged=discharged - did not require any follow up treatment; Referral/follow-up =discharged - follow up treatment to be provided by GP, referred to AED clinic, referred to fracture clinic, referred to other out-patient clinic, referred to other health care professional; Other=died in department, left department before being treated, left department having refused treatment, other.

Table 4: Trafford General ED: Total injury attendances by method of disposal and injury group, April 2008 to March 2009

Disposal	RTC		Assault		DSH		Sports injury		Other accident		Total	
	n	%	n	%	n	%	n	%	n	%	n	%
Discharged	1012	71	231	37	56	13	544	55	23201	46	25044	46
Referral/follow-up	308	21	257	42	95	22	393	39	17396	34	18449	34
Admitted	46	3	66	11	193	45	31	3	7780	15	8116	15
Other	69	5	63	10	83	19	27	3	2049	4	2291	4
Total	1435	100	617	100	427	100	995	100	50426	100	53900	100

Table 5: Trafford General ED: Total injury attendances by mode of arrival and month, April 2008 to March 2009

Mode	Apr	May	Jun	Jul	Aug	Sep	Oct	Nov	Dec	Jan	Feb	Mar	Total	%
Private transport	3328	3798	3668	3832	3527	3740	3486	3345	3198	3160	3249	4112	42443	79
Ambulance	695	708	705	779	700	687	783	779	879	793	757	785	9050	17
Public transport	153	110	110	130	101	124	100	85	84	77	91	84	1249	2
Foot	77	65	76	98	81	82	84	86	71	64	54	56	894	2
Police	12	***	5	6	8	***	18	17	16	14	9	***	123	0
Foot	14	15	***	19	***	16	9	7	***	***	***	18	111	0
Ambulance	***	***	***	***	***	***	***	***	***	***	***	***	30	0
Total	4281	4704	4568	4865	4422	4658	4484	4320	4252	4115	4165	5066	53900	100

Table 6: Trafford General ED: Total injury attendances by time of arrival and injury group, April 2008 to March 2009

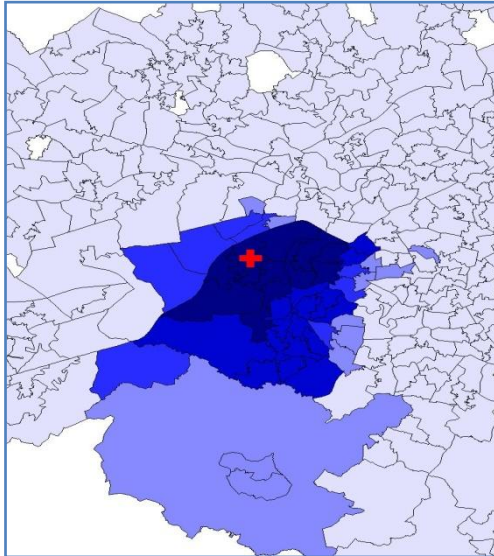
Time group	RTC		Assault		DSH		Sports injury		Other accident		Total	
	n	%	n	%	n	%	n	%	n	%	n	%
0 - 1.59	***	***	77	12	60	14	***	***	1340	3	1509	3
2 - 3.59	***	***	87	14	33	8	***	***	875	2	1016	2
4 - 5.59	***	***	28	5	25	6	***	***	647	1	713	1
6 - 7.59	14	1	17	3	16	4	11	1	1034	2	1092	2
8 - 9.59	141	10	26	4	12	3	99	10	5620	11	5898	11
10 - 11.59	233	16	50	8	18	4	132	13	8572	17	9005	17
12 - 13.59	251	17	47	8	19	4	154	15	7798	15	8269	15
14 - 15.59	228	16	62	10	42	10	155	16	7245	14	7732	14
16 - 17.59	188	13	50	8	44	10	153	15	6486	13	6921	13
18 - 19.59	177	12	45	7	45	11	117	12	5260	10	5644	10
20 - 21.59	102	7	62	10	56	13	97	10	3347	7	3664	7
22 - 23.59	45	3	66	11	57	13	67	7	2202	4	2437	5
Total	1435	100	617	100	427	100	995	100	50426	100	53900	100

For further information please contact: Centre for Public Health, Research Directorate, Liverpool John Moores University, 3rd Floor, Henry Cotton Building, 15-21 Webster Street, Liverpool, L3 2ET, Tel: 0151 231 4513 or Email: i.j.warren@ljmu.ac.uk
 Website: www.tiig.info (data requests should be made through the website)

Figure 4a,b,c,d: Middle Super Output Area of residence for injury attendances to Trafford General ED. Quintiles of crude rates per 1,000 population, April 2008 to March 2009

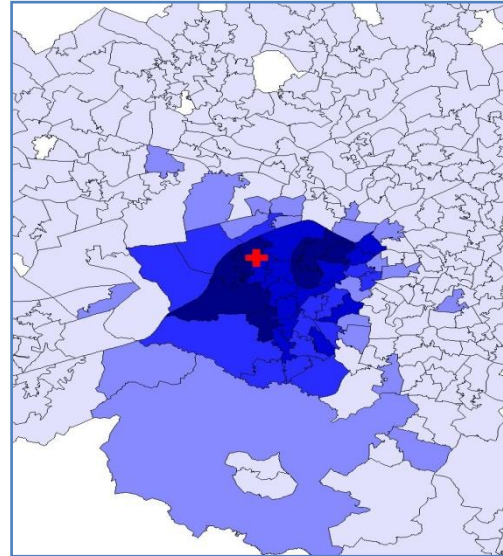
a) All injury attendances: quintiles of crude rates per 1,000 population b) RTC: quintiles of crude rates per 1,000 population

+ Trafford General ED



1 (0.00 – 7.97)	MSOA E02001275 (445.10)
2 (7.98 – 24.37)	MSOA E02001267 (374.84)
3 (24.38 – 56.27)	MSOA E02001265 (358.54)
4 (56.28 – 222.41)	MSOA E02001261 (356.22)
5 (222.42 – 445.10)	

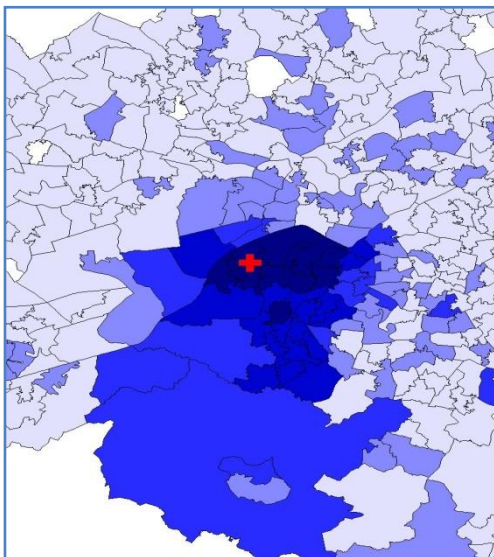
+ Trafford General ED



1 (0.00 – 0.29)	MSOA E02001275 (14.59)
2 (0.30 – 1.10)	MSOA E02001265 (11.01)
3 (1.11 – 2.96)	MSOA E02001264 (8.07)
4 (2.97 – 6.66)	MSOA E02001263 (7.61)
5 (6.67 – 14.59)	

c) Sports injury: quintiles of crude rates per 1,000 population

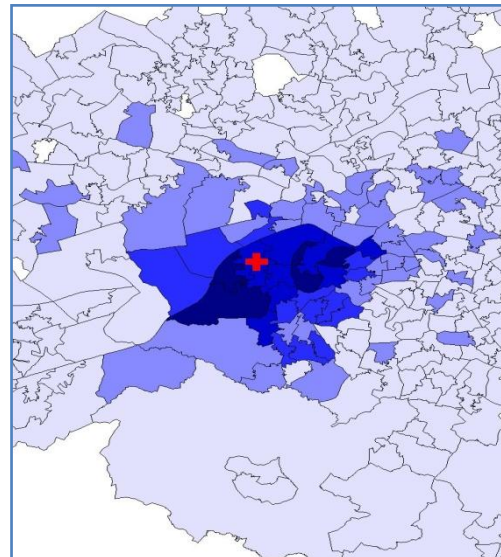
+ Trafford General ED



1 (0.00 – 0.08)	MSOA E02001264 (7.18)
2 (0.09 – 0.41)	MSOA E02001267 (6.81)
3 (0.42 – 1.18)	MSOA E02001260 (6.78)
4 (1.18 – 3.81)	MSOA E02001263 (6.38)
5 (3.82 – 7.18)	

d) Assault: quintiles of crude rates per 1,000 population

+ Trafford General ED



1 (0.00 – 0.08)	MSOA E02001275 (7.23)
2 (0.09 – 0.40)	MSOA E02001265 (6.81)
3 (0.41 – 1.95)	MSOA E02001266 (6.62)
4 (1.96 – 4.52)	MSOA E02001261 (5.25)
5 (4.53 – 7.23)	